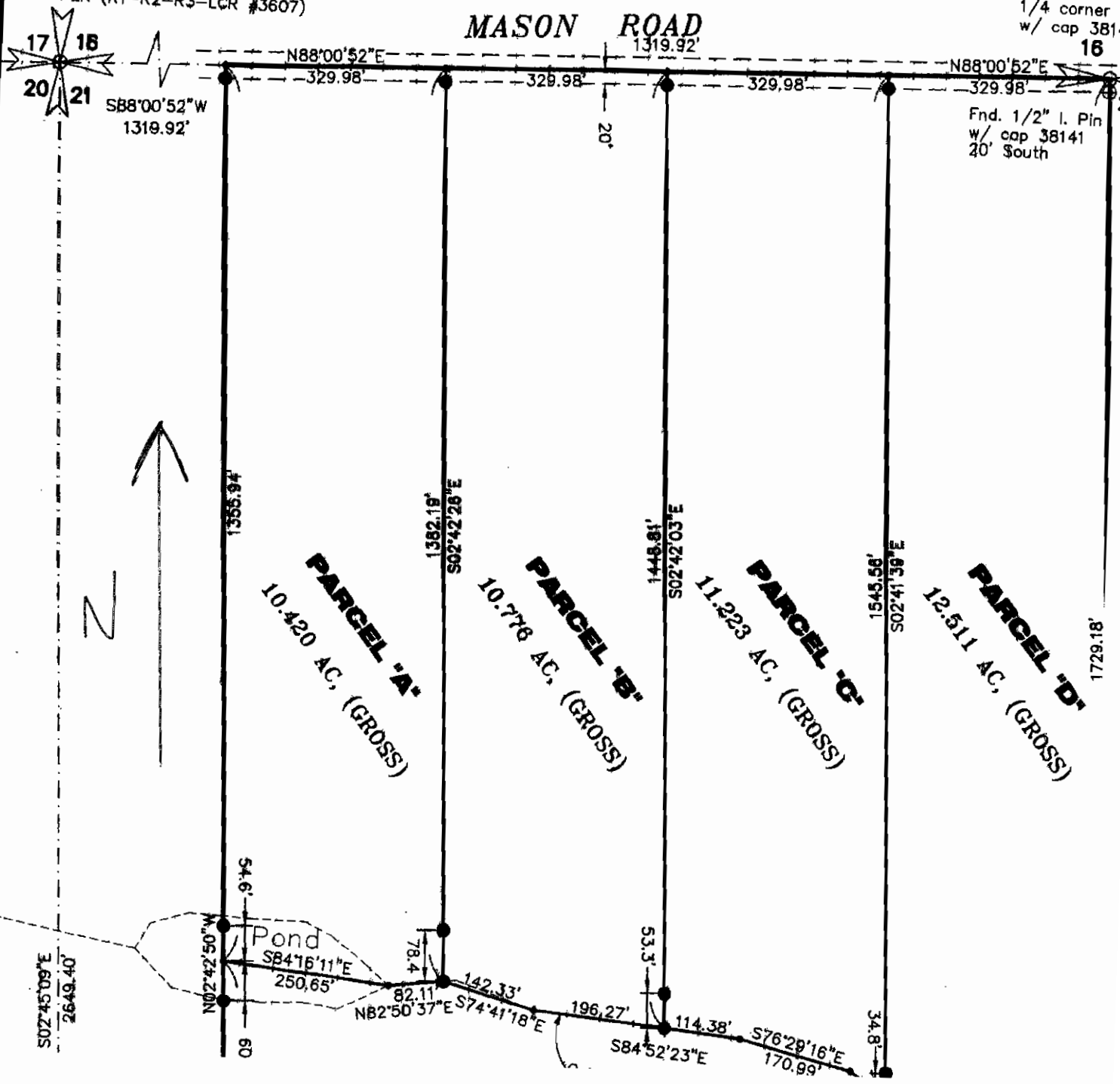


# E. 1/2 N.W. 1/4 OF SECTION 21, T.29N

FND 2" I.P.I.P.E  
PER (R1-R2-R3-LCR #3607)

1/4 corner  
w/ cap 3814  
16

## MASON ROAD



17 18  
20 21  
SB88°00'52"W  
1319.92'

N88°00'52"E  
329.98' 329.98' 329.98' 329.98'

Fnd. 1/2" I. Pin  
w/ cap 38141  
20' South

**PARCEL 'A'**  
10.420 AC. (GROSS)

**PARCEL 'B'**  
10.776 AC. (GROSS)

**PARCEL 'C'**  
11.223 AC. (GROSS)

**PARCEL 'D'**  
12.511 AC. (GROSS)

S02°45'09"E  
2649.40'

Pond  
S84°16'11"E  
250.65'

NB2°50'37"E  
82.11'

S74°41'18"E  
142.33'

S84°52'23"E  
196.27'

S76°29'16"E  
114.38'

34.8'

1729.18'

N

